



Hydraulic valves

# Directional Valves

Catalogue

BEIJING HUADE HYDRAULIC INDUSTRIAL GROUP CO.,LTD.

<b>BEIJING HUADE HYDRAULIC INDUSTRIAL GROUP CO.,LTD.</b>	<b>Check valve sandwich plate Type Z1S...30B/</b>			RE 21533/12.2004
	Size 6,10	up to 31.5 MPa	up to 100L/min	Replaces: RE 21533/05.2001

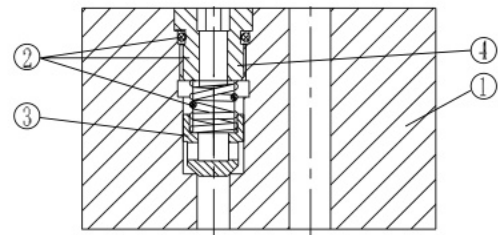
**Features:**

- Sandwich plate valve for use in vertical stacking assemblies
- 8 different isolating functions

The Z1S 6 valve is a direct operated check valve in sandwich plate design.

It is used for the leak-free closure in one direction and allows free-flow in the counter direction.

This valve type has a metallic seal between poppet (3) and housing (1). Valves of this type are especially suitable for applications with operating pressures above 10.0 MPa and flow velocities over 4 m/s.



**Ordering details**

Z1S      — 30      B /      \*

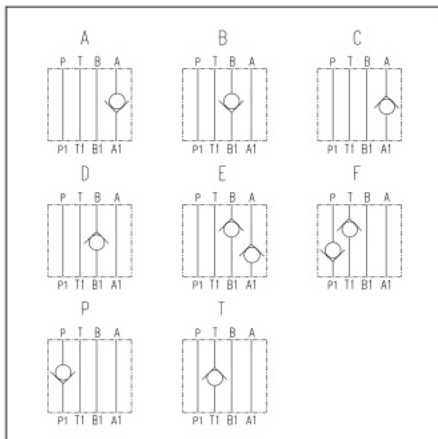
Size 6                      = 6  
Size 10                     = 10

Further details in clear text

No code = Mineral oils  
V = phosphate ester

B = The technology of Beijing Huade Hydraulic

30 = Series 30 to 39  
(30 to 39: unchanged installation and connection dimensions)



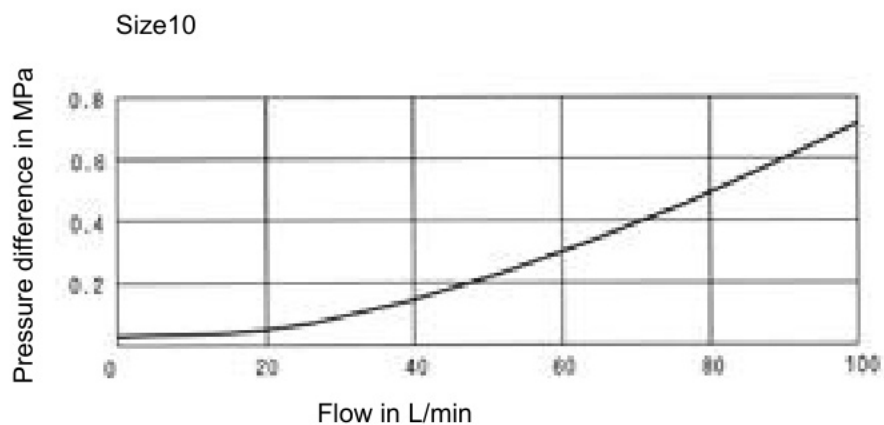
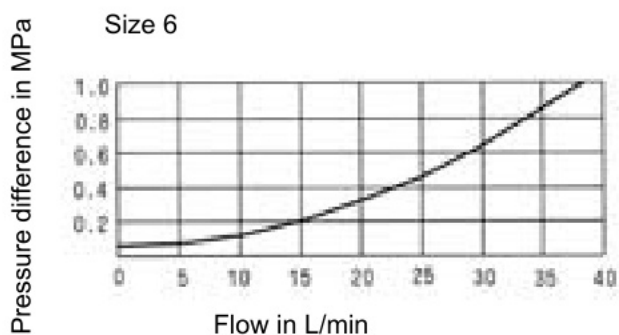
1= Cracking pressure 0.05 MPa  
2= Cracking pressure 0.3 MPa  
3= Cracking pressure 0.5 MPa

## Technical data

Size		6	10
Max. flow (L/min)		40	100
Max. operating pressure (MPa)		31.5	
Cracking pressure		See the ordering details	
Pressure fluid		Mineral oils(for NBR seal) or phosphate ester(for FPM seal)	
Pressure fluid temperature range (°C)		-30 to +80	
Viscosity range (mm <sup>2</sup> /s)		2.8 to 500	
Weight (kg)		0.8	2.3

\* For application outside these parameter, please consult us!

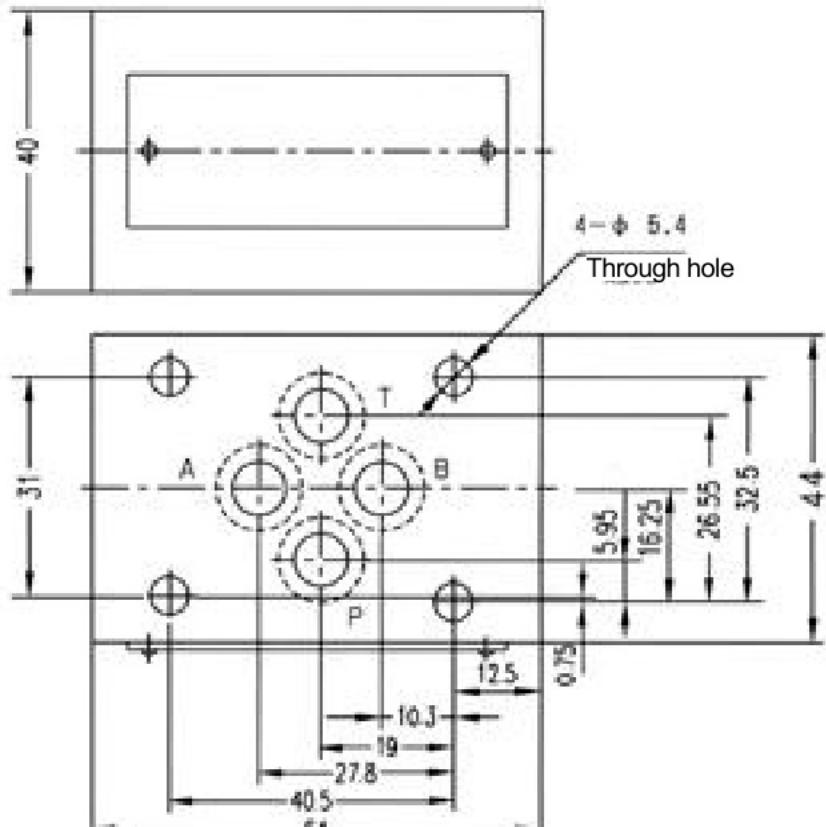
## Characteristic curves ( measured at $v = 41 \text{ mm}^2/\text{s}$ and $t = 50 \text{ }^\circ\text{C}$ )



Unit dimensions

(Dimensions in mm)

Size 6  
O-ring 4-9.25X1.78

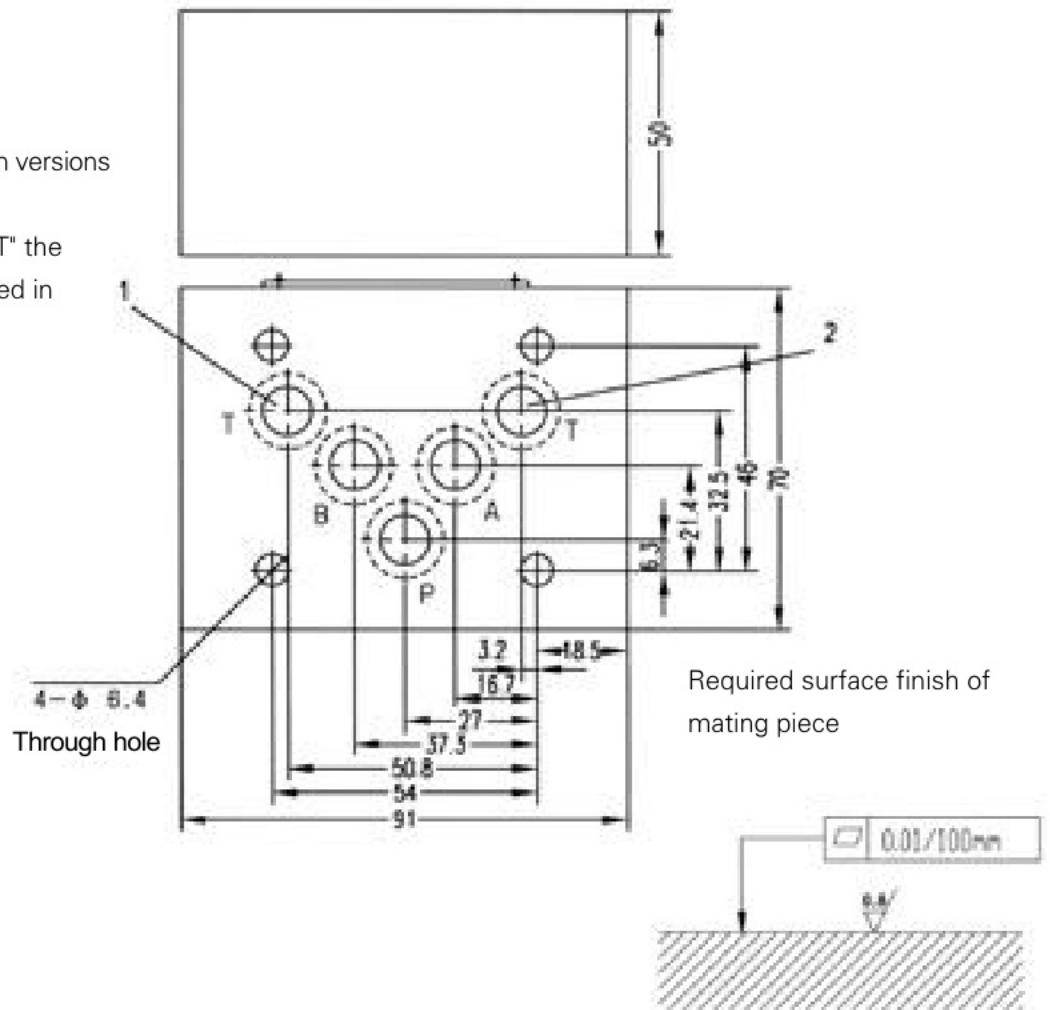


Size10

O-ring 5-12X2

1 This port is blocked in versions "F" and "T".

2 In versions "F" and "T" the check valve is installed in this channel.



## Notice

1. The fluid must be filtered. Minimum filter fineness is 20  $\mu\text{m}$ .
2. The tank must be sealing up and an air filter must be installed on air entrance.
3. Products without subplate when leaving factory, if need them, please ordering specially.
4. Valve fixing screws must be high intensity level (class 10.9). Please select and use them according to the parameter listed in the sample book.
5. Roughness of surface linked with the valve is required to  $\frac{0.8}{\sqrt{\text{R}}}$ .
6. Surface finish of mating piece is required to 0.01/100mm.

## Notice

1. The fluid must be filtered. Minimum filter fineness is 20  $\mu\text{m}$ .
2. The tank must be sealing up and an air filter must be installed on air entrance.
3. Products without subplate when leaving factory, if need them, please ordering specially.
4. Valve fixing screws must be high intensity level (class 10.9). Please select and use them according to the parameter listed in the sample book.
5. Roughness of surface linked with the valve is required to  $\frac{0.8}{\sqrt{\text{ }}$ .
6. Surface finish of mating piece is required to 0.01/100mm.